



Synergy 3580 Series Mortice Locks

A comprehensive range of automatic deadlatches for narrow stile hinged doors, combining convenience and security.

Features and Specifications

The Australian designed and built Synergy Series Short Backset Cylinder Mortice Locks are made of the finest materials, with the easy action and solid feel of the world's finest locks.

Single Action Escape

- Both lockset and furniture are reversible without disassembly

Case and Cover Plates

- High purity alloy material cases
- Brass plates provided for all finishes

Furniture Plates and Lever Handles

- Solid Brass

Backset

Backsets of 23, 25.4mm, 30mm and 38mm are available

Latchbolts

- Latchbolts are 15mm, stainless steel
- Deadlatching is achieved by an auxiliary stainless steel latchbolt
- This auxiliary bolt retracts when the main latchbolt is withdrawn when the door is closed

Springs

- High-grade spring steel material, corrosion protected.

Cylinder Retaining Pin

- Hard-drawn spring steel wire, corrosion protected

Door Thickness

- Timber doors: 32 to 50mm
- These locks are available with a long coverplate, strike and screws to suit timber doors and jambs
- Metal doors: 35 to 50mm
- Suits hollow-style aluminium door sections with 37mm minimum internal depth

Cylinder

Bump resistant five pin tumbler mechanism, standard Lockwood oval shaped, brass cylinders and brass barrels

Keying

Standard Keying

- Supplied individually keyed with two keys per lock
- 78000 key combinations
- Key blank KB2015P

Restricted Special Keying

Lockwood locks can be keyed to a number of controlled and/or specially keyed systems. These range from legally protected keys to protect against unauthorised duplication and can also include specially designed keying systems such as master key systems. This allows for different levels of mechanical access control.

Please refer to assaabloy.com.au for keying systems or contact your local sales office or customer service for specific information.

Security

Standard Synergy Series Cylinder Mortice Locks conform to physical security Level S2 Australian Lock Standard AS4145.2:1993.

Conformance to physical security Level S3 available on application.

Durability

All Synergy Series Cylinder Mortice Locks conform to durability level D3 Australian Lock Standard AS4145.2:1993.

Door Clearance

To ensure correct functioning of the deadlatching mechanism and security for all locks, the clearance between the door and frame should be no less than 3mm. The deadlatching will operate up to 8mm door clearance, however door clearances over 5mm are not recommended.

Standard Finishes

Chrome Plate	CP
Satin Chrome Brushed	SC
Polished Brass	PB

Specification Service

For all architectural hardware specification assistance refer to your local Lockwood sales office.

A fully comprehensive, obligation free, architectural door hardware specification can be prepared by Lockwood architectural hardware consultants.

Holdback Cylinders

A key operated holdback function for latching cylinders is available.

Extended Cylinders

Modular cylinder extensions are available for thicker doors.

Rebate

Rebate kits to suit 13mm standard rebate are available.

Electric Strikes

Lockwood Synergy Series Mortice Locks are compatible with most electric strikes.

For further details refer to

assaabloy.com.au

S2 HIGH SECURITY

D3 DURABILITY



1. Hub Selection

Sliding adjustable locking blocks attached to the snib, screw fixed in either the operative or inoperative positions, accessible from the outside of the lock body to set hubs as required.

2. Latch Bolt

- Reversible for both left and right hand doors, opening in or opening out without disassembly
- Standard deadlatch configuration only, 15mm stainless steel material
- Electric strike compatibility
- Separate auxiliary bolt moves into lock case simultaneously with latch bolt
- Radius bolt provides greater deadlatch throw and smoother closing action

3. Strike

Brass material to suit inward/outward opening doors to conform to Australian Lock Standard universal strike.

4. Door Thickness

- Timber doors: 32 to 50mm
- Metal doors: 35 to 50mm

5. Backsets

- Standard Backset - 23mm
- Other backsets available on application 25.4, 30 and 38mm

6. Cylinder/Adaptor Retention

"Slip Pin" Cylinder/Adaptor fixing method, which allows attachment to the lock case by inserting a non-threaded cylindrical pin through the front of the lock case.

7. Multi-Function Lock

- Lock is designed to significantly reduce stock line items
- Standard cylinder mortice lock can be converted from escape function to combination function by simple manipulation of hub snibs without lock case disassembly

8. Rebate Kit

Rebate kit suitable for timber doors with a minimum backset of 30mm.

9. Case Assembly

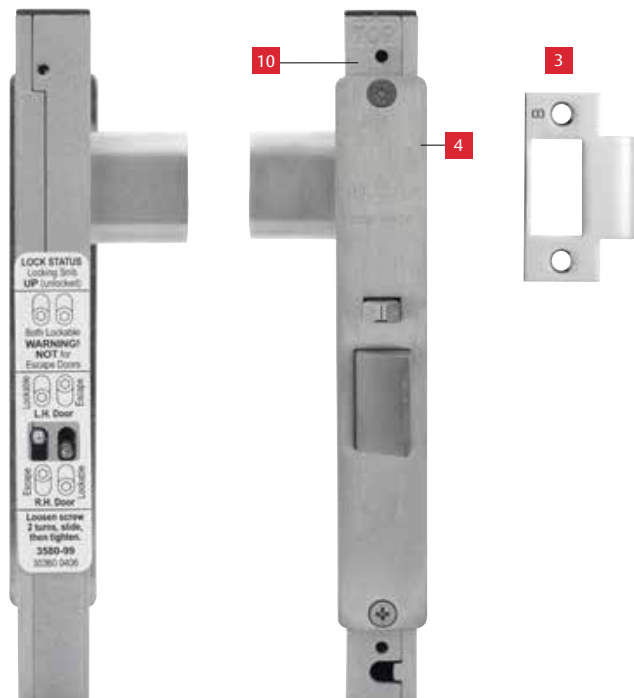
High purity alloy case and backplate.

10. Lock Fixing

Fabricator pack (aluminium doors) and timber door fixing.

Anti-Lockout Function*

Lockset 3582-A provides anti-lockout function for patio, school and other applications.



LOCK STATUS
Locking Snib
UP (unlocked)

Both Lockable
WARNING!
NOT for
Escape Doors

LOCKING
L.H. Door

UNLOCKING
R.H. Door

Loosen screw
2 turns, slide,
then tighten.
3580-09
30360 0406

Synergy Series Short Backset Vestibule Locks



Description

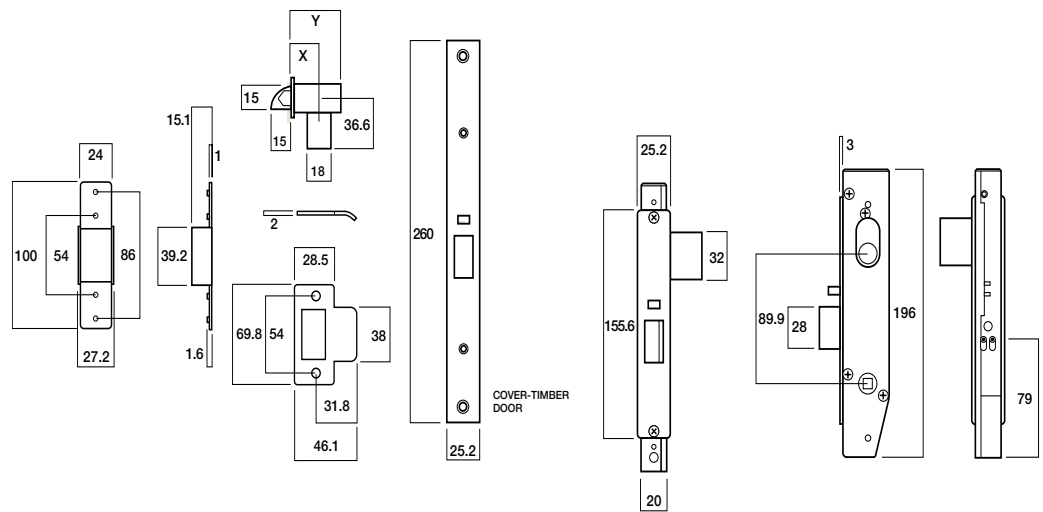
Various latching functions operated generally by key or handle outside and by turnknob, key or handle inside. These locks comply with building regulations for single-action escape doors.

For ease of selection specify primary lock i.e. 3582SC. This lock can then be easily adapted to suit function required.

Product Details

Furniture	Compatible with Lockwood 4800 and 5800 Series Furniture. Refer to lockweb.com.au for further details.
Latch	Deadlatch only.
Standard Finishes	Satin Chrome Brushed (SC) Chrome Plate (CP) Polished Brass (PB) Other finishes on application.

Synergy Series Short Backset Vestibule Locks



Synergy Series Short Backset Vestibule Locks

Part Number	3582	4582	5582	6582
Dimension X	23	25.4	30	38
Dimension Y	39.4	41.8	46.8	54.4
Minimum internal depth of door	40	43	48	58

Note: For Timber Cover plate and lockset, order 35925C.

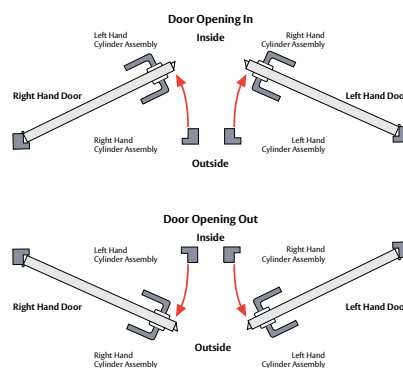
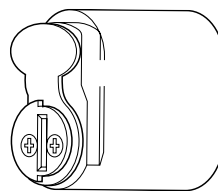
Synergy Series Accessories

Holdback Cylinder

Part Number	Right Hand	Part Number	Left Hand
3580-2402CP	Chrome Plate	3580-2452CP	Chrome Plate
3580-2402SC	Satin Chrome Brushed	3580-2452SC	Satin Chrome Brushed
3580-2402PB	Polished Brass	3580-2452PB	Polished Brass

Description

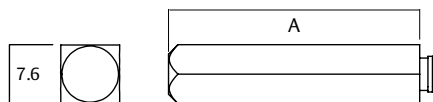
- For use with Synergy Series locks only
- Special latching cylinders with levers that enable the latchbolt to be held in retracted position.
- To apply holdback: Insert key into cylinder and retract bolt with one full turn of key. Hold bolt depressed with finger and withdraw key
- To release holdback: Insert key into cylinder, rotate key one full turn and withdraw key



Mortice Lock Sprindles

Part Number	Pack Size	Length "A"	Door Thickness	
			Min	Max
SP3570-5018	10	33mm	32	50
SP3570-5228	10	45mm	50	75
SP3570-5238	1	58mm	75	100
SP3570-5258	10	108mm	100	200
SP3570-5328	10	125mm	200	240

Note: 33mm length supplied in accessory pack with primary lock.



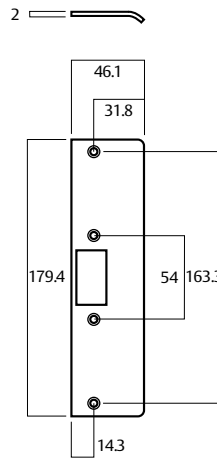
Synergy Series Accessories

Retrofit Strike Kits

Part Numbers	Finishes
3782-RFSTKCP	Chrome Plate
3782-RFSTKSC	Satin Chrome Brushed
3782-RFSTKPB	Polished Brass

Description

For replacement of existing installations where Lockwood 5900, 595 and Astra Short Backset are used. For replacement of Astra specify 25.4mm backset.

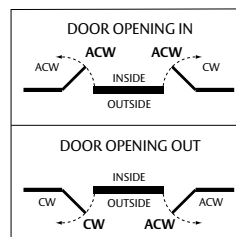
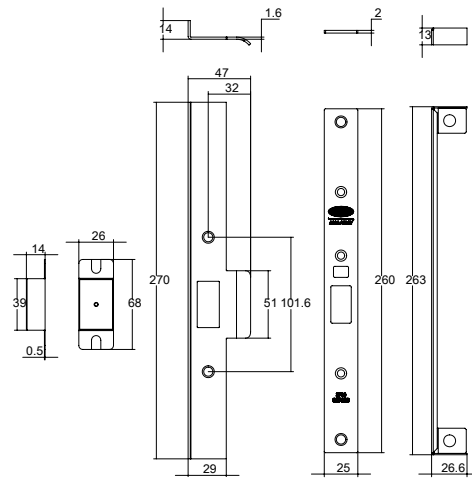


Rebate Kits

Part Number	Finish
5782-RK##CP	Chrome Plate
5782-RK##SS	Stainless Steel
5782-RK##PB	Polished Brass

Description

Rebate kits to suit 13mm rebated timber doors with minimum backset of 30mm. To order, add door handing to part number. Refer to door handing guide at the bottom of page.
designates door handing.
CW - Clockwise
ACW - Anti-clockwise



CW Left Hand open in (Clockwise) Right Hand open out

ACW Left Hand open out (Anti-Clockwise) Right Hand open in

Synergy Series Accessories

Synergy Series Conversion Chart

Synergy Series	Function Description	Primary Lock	Cylinder(s)	Turn Adaptor	Outside Cylinder Cam	Inside Cylinder Cam
3582SC	Short Backset Primary Lock - Metal Fixing	3582SC				
3582-ASC	Short Backset Anti-lock Primary Lock	3582-ASC				
3582-T#SC	Exit Door Lock - turn only	3582SC		SP3572-5250		
3582WA#SC	Escape Office Lock - Antilockout	3582-ASC	575-2SC	SP3572-5250	W	
3582WT#SC	Escape Office Lock	3582SC	575-2SC	SP3572-5250	W	
3582X-#SC	Storeroom Lock	3582SC	570-2SC		X	
3582XT#SC	Entry Door Lock	3582SC	570-2SC	SP3572-5250	X	
3582XZ#SC	Double Cylinder Escape Lock	3582SC	574-701SC		X	Z
3582-Z#SC	Single Cylinder Exit Door Lock	3582SC	572-2SC			Z
3582Z-#SC	Classroom Lock	3582SC	572-2SC		Z	
3584ET#SC	Privacy Latch	3582SC		SP3572-5250		
3584SC	Passage Latch	3582SC				
3584-T#SC	Patio Lock - turn only	3582SC		SP3572-5250		
3584WT#SC	Office Lock	3582SC	575-2SC	SP3572-5250	W	
3584XX#SC	Double Cylinder Glass Door Lock	3582SC	570-701SC		X	X
3584XZ#SC	Glass Entry Door Lock	3582SC	574-701SC		X	Z
3584Z-#SC	Single Cylinder Glass Entry Door Lock	3582SC	572-2SC		Z	
3584ZZ#SC	Double Cylinder Glass Door Lock	3582SC	572-701SC		Z	Z
3592SC	Short Backset Primary Lock - Timber Fixing	3592SC				

Synergy Series Function Matrix

Function Matrix

Sample part number 4582XTRSC is made up of six sections. The description for this part number is a vestibule set with external cylinder, internal turnknob for right hand door and satin chrome brushed finish. Choose your product by selecting an option from each section.

Backset	Door Material	Function	Sub Function	Handing	Finish
3	58	2	XT	R	SC

Backset	Functions	Handing
23mm	3	Right Handed
25.4mm	4	Left Handed
30mm	5	
38mm	6	

Door Material	Sub Functions	Finish
Metal	eg. Outside X Inside T	Chrome Plate
Timber	Locking Cylinder with W Cam	Satin Chrome Brushed
	Latching Cylinder with X Cam	Polished Brass
	Locking Cylinder with Y Cam	
	Locking Cylinder with Z Cam	
	Emergency Button	
	Turnbutton Adaptor	
	Anti-lockout	

Code

- Backset:** Nominate backset as required, eg. 3 = 23mm backset.
- Door Material:** Select function, eg. 58 = metal door.
- Function:** Select function, eg. 2 = vestibule lock.
- Sub Function:** Determine sub function for both exterior and interior, eg: Exterior - X = latching cylinder, Interior - T = turnbutton adaptor.
- Handing:** If applicable refer to door handing chart to determine left or right handing, eg. R.
- Finish:** Select appropriate finish, eg. SC. Other finishes available on application.

